
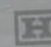


# WOOD CUTTING BANDSAW BLADES



 Håkansson  
Sågblad AB

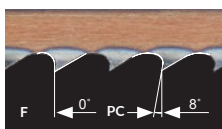
 Håkansson  
Sågblad AB

## CARBON STEEL

Suitable for cutting not only wood but also aluminum, brass, bronze, cast iron, copper, lead, zinc, graphite, fiberglass, plastic, cork and other non-ferrous metals.

- Standard products
- Special - MOQ may be required

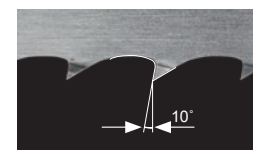
### SILCO™



- Suitable for cutting wood, aluminum, brass, bronze, cast iron, copper, lead, zinc, graphite
- Manufactured from high silicon steel
- High quality, flexibility and performance make the blade ideal for friction cutting
- Hardened tooth tip/flexible back
- Tooth set: AR

sizes (mm)	Teeth/inch							sizes (Inches)	
	2	3	4	6	8	10	14		18
4 x 0.63						●			3/16 x .025
6 x 0.63			●	●	●	●	●	○	1/4 x .025
10 x 0.63		●	●	●	●	●	●		3/8 x .025
12 x 0.63		●	●	●	●	●	●	○	1/2 x .025
12 x 0.81	○	●							1/2 x .032
16 x 0.63			●						5/8 x .025
16 x 0.81		●	●			●			5/8 x .032
19 x 0.63		●							3/4 x .025
19 x 0.81		●	●	●		●	●		3/4 x .032
25 x 0.90	●	●	●	●		●			1 x .035
31 x 1.07		●							1 1/4 x .042

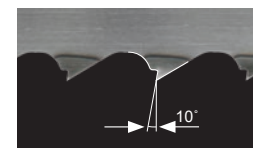
### SILVER LOG\*



- Ground, hardened tooth profile for log sawing and pallet production
- Suitable for mobile sawmills and pallet sawing
- Length can be adapted to all saws regardless of brand
- Tooth set: RS

sizes (mm)	Pitch MM		sizes (Inches)
	22	25	
32 x 1.05	●		1 1/4 x .041
35 x 0.90	●		1 1/4 x .035
35 x 1.00	●		1 1/4 x .039
38 x 1.10	●		1 1/2 x .043
38 x 1.25	●		1 1/2 x .049
50 x 1.10	●	●	2 x .043
50 x 1.25		●	2 x .049

### SILVER LOG DUST REMOVER\*



- Uniquely ground tooth profile for efficient cutting of timber and boards
- Provides optimal chip flow
- Minimizes the risk of mold
- Low threshold gives minimal spillage and chips

sizes (mm)	Pitch MM		sizes (Inches)
	19		
29 x 0.90	●		1 1/8 x .035
32 x 1.05	●		1 1/4 x .041

### SILCO HOBBY

- Extra flexible blade
- Specially designed for small bandsaw machines with small diameter wheels
- Tooth set: AR

sizes (mm)	Teeth/inch			sizes (Inches)
	4	6	14	
6 x 0.36	●	●	●	1/4 x .014
10 x 0.36	●	●		3/8 x .014
16 x 0.36	●	●		5/8 x .014

### SILCO LOG™



- Our most popular saw blade for portable sawmills
- Carbon steel with hardened teeth
- Produced from the best raw material with high silicon content
- Tooth set: RS

sizes (mm)	Pitch MM			sizes (Inches)
	19	22	25	
25 x 1.07	●			1 x .042
31 x 1.07	○	●		1 1/4 x .042
31 x 1.14	●	●		1 1/4 x .045
38 x 1.07		●	●	1 1/2 x .042
38 x 1.32		●	●	1 1/2 x .052
51 x 1.07			●	2 x .042
51 x 1.32			●	2 x .052

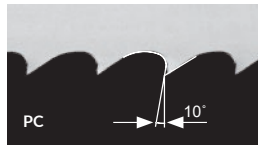
\*Available in selected markets, please contact Håkansson Sågblad for availability.

## M42 BI-METAL

All the performance advantages of a bi-metal blade including long life and high speed cutting in specially manufactured HSS blades for log cutting.

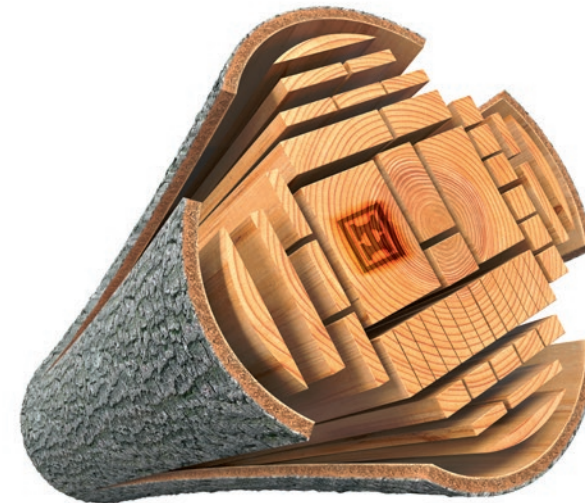
- Standard products
- Special - MOQ may be required

### M42 LOG™ HSS



- For portable sawmills
- The suitable choice where high production is required
- Specially designed for optimal chip flow and increased cutting rate
- High wear resistance
- HSS edge for longer run time between regrinding
- Tooth set: RS

sizes (mm)	Pitch MM			sizes (Inches)
	12	22	25	
27 x 0.9	●		●	1 x .035
34 x 0.9		○		1 1/4 x .035
34 x 1.1		●	○	1 1/4 x .042
41 x 1.3		●		1 1/2 x .050
54 x 1.6			●	2 x .063



Can't see what you're looking for?

Contact us to find out about other options and customization possibilities to match your application.



Håkansson Sågblad AB, Box 125, SE-662 23 Åmål, Sweden. Phone: +46 (0)532 61640.  
order@hakansaw.com www.hakansaw.com